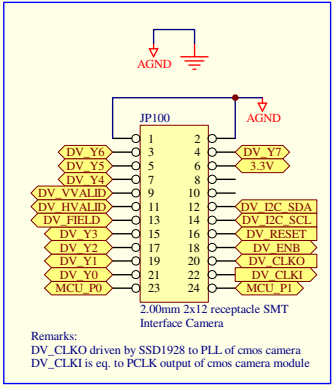
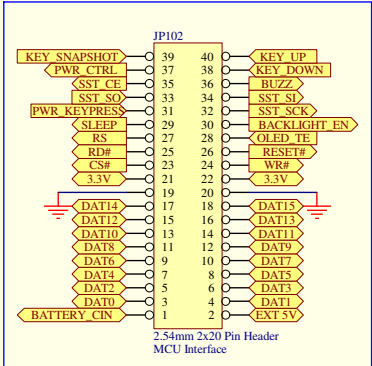


Title: SSD1928 EVK Revision 2.4B Project Page		
Size A4	Number	Revision 2.4B
Date: 15th Jan 2013	Sheet 1 of 7	

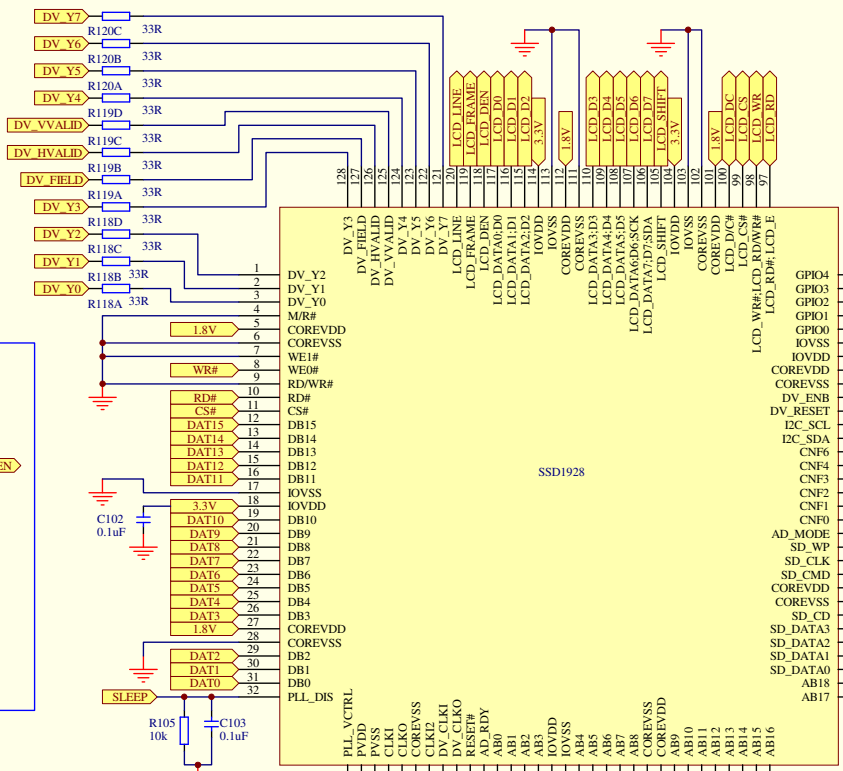
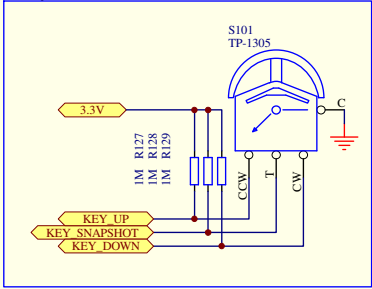
Camera Interface



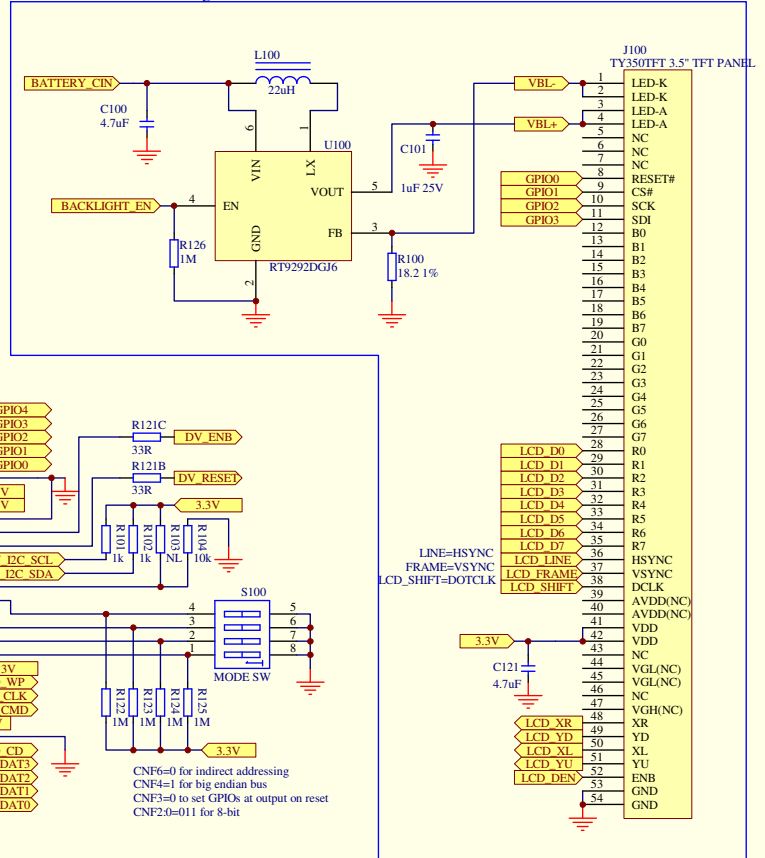
MCU Interface



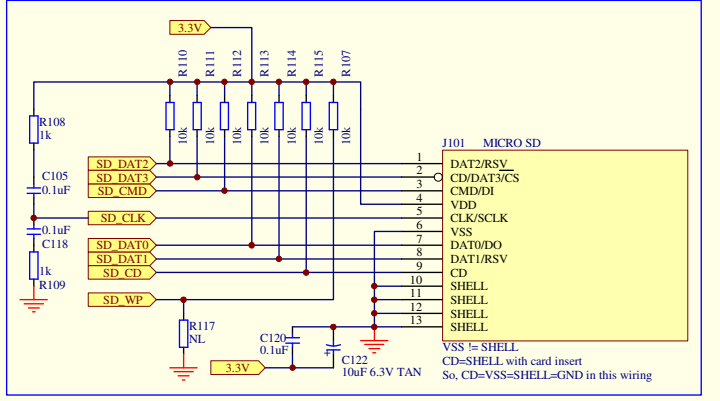
Rotary Switch



TFT interface and backlight



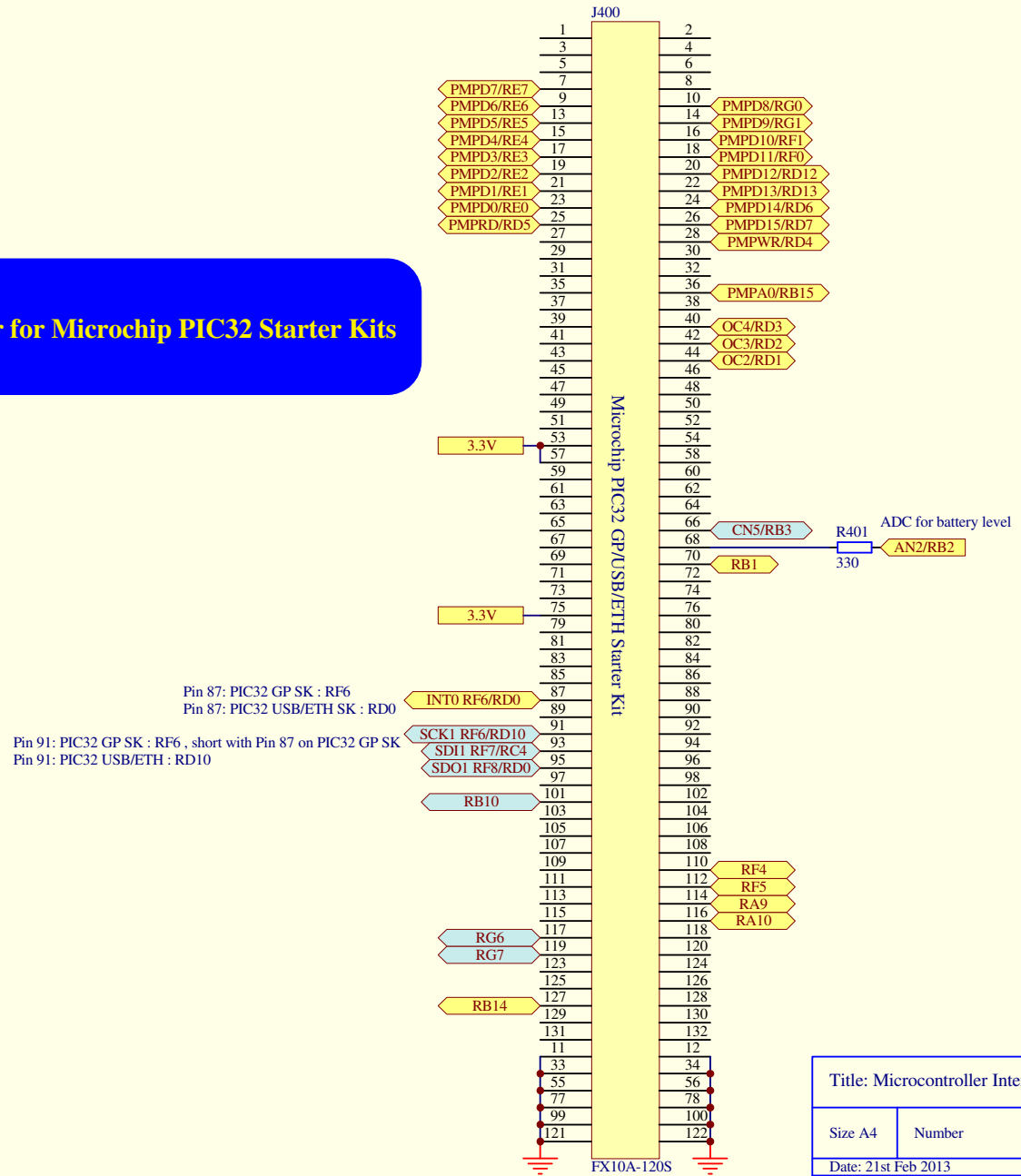
Micro SD Interface



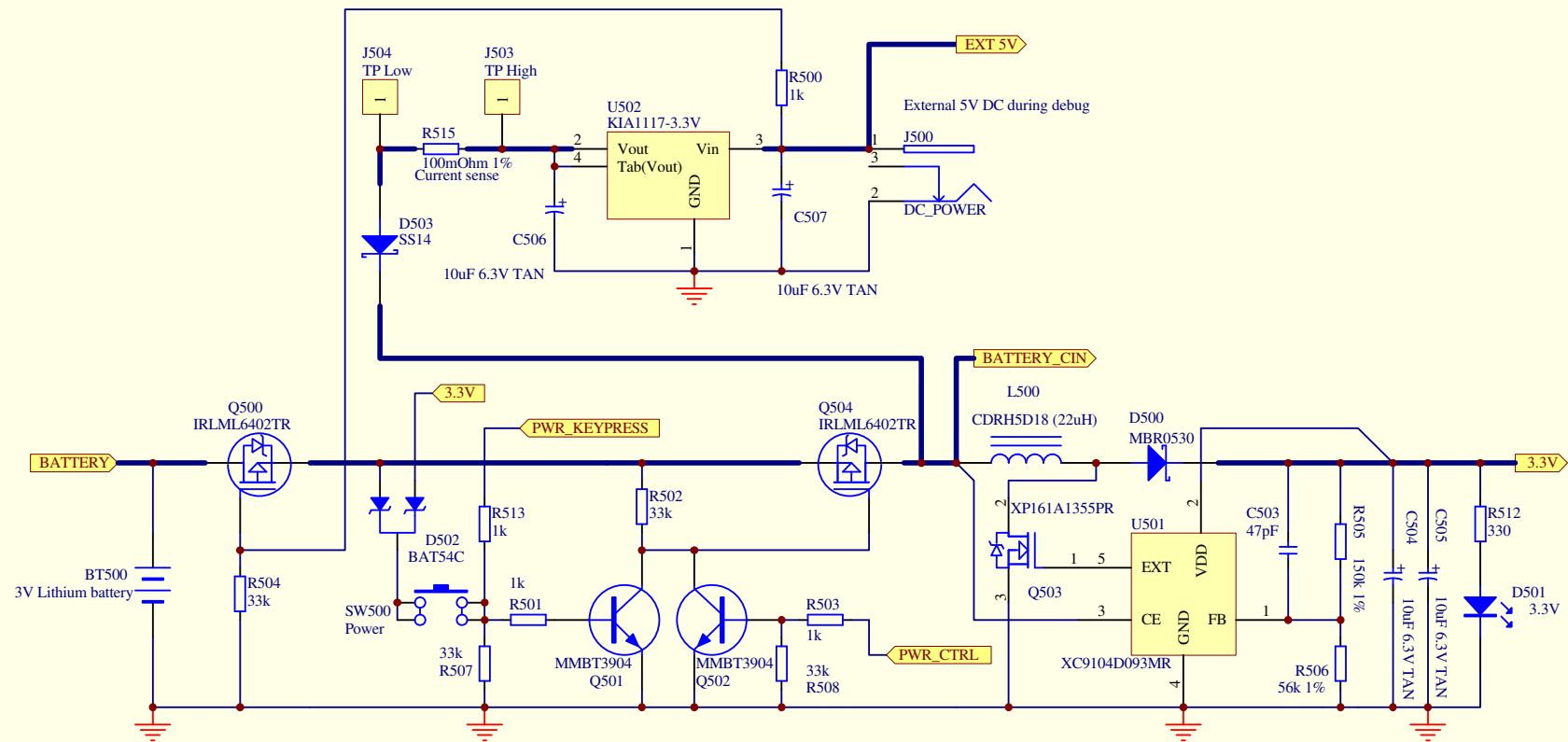
Title: SSD1928QL9 Image Processor

Size A3	Number	Revision 2.4B
Date: 15th Jan 2013	Sheet 2 of 7	

Optional FX10A connector for Microchip PIC32 Starter Kits



Title: Microcontroller Interface (Microchip PIC32 Starter Kits)		
Size A4	Number	Revision 2.4B
Date: 21st Feb 2013		Sheet 3 of 7



$$V = 0.9 * (R505 + R506 / R506)$$

$$= 0.9 * (150 + 56 / 56)$$

$$= 3.3V$$

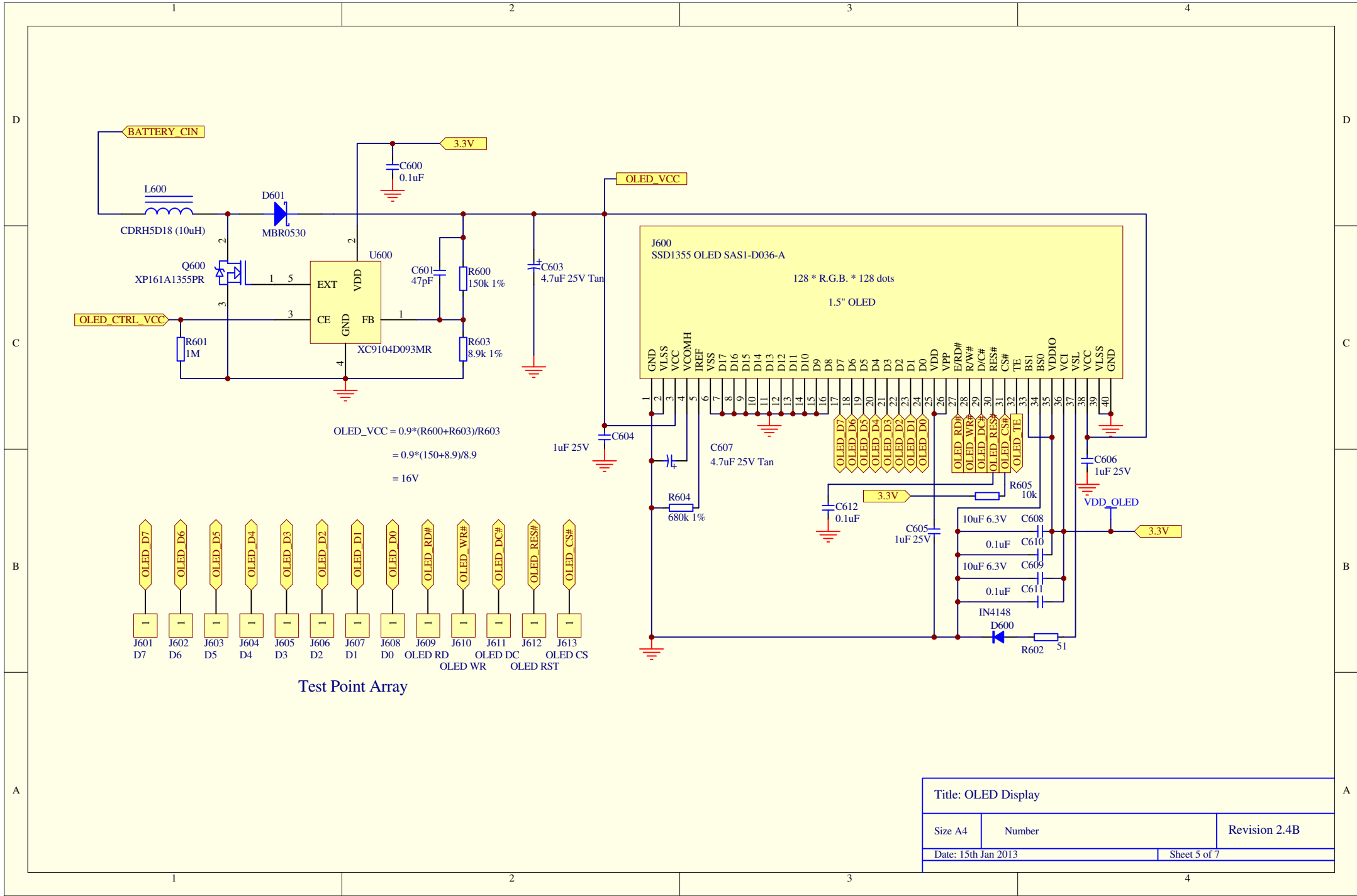
SWITCH ON SEQUENCE

SW500	Gate - IRLML6402TR	BATTERY_CIN
Open	Gate G pulled high by R502	0V
Pressed	Gate G pulled low by Q501	BATTERY
MCU initialized, PWR_CTRL outputs HIGH to maintain Gate G low. PWR_KEYPRESS set input and wait until key release		
don't care	Low	BATTERY

SWITCH OFF SEQUENCE

SW500	Gate - IRLML6402TR	BATTERY_CIN
Pressed for >1sec	Low	BATTERY
PWR_KEYPRESS senses a low to high transition		
MCU outputs LOW on PWR_CTRL pin		
Released	High	0V

Title: Battery Management		
Size A4	Number	Revision 2.4B
Date: 15th Jan 2013	Sheet 4 of 7	

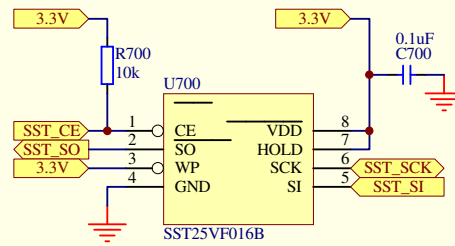


$$\begin{aligned}
 \text{OLED_VCC} &= 0.9 \cdot (R600 + R603) / R603 \\
 &= 0.9 \cdot (150 + 8.9) / 8.9 \\
 &= 16\text{V}
 \end{aligned}$$

Test Point Array

OLED D7	OLED D6	OLED D5	OLED D4	OLED D3	OLED D2	OLED D1	OLED D0	OLED RD#	OLED WR#	OLED DC#	OLED RES#	OLED CS#
J601	J602	J603	J604	J605	J606	J607	J608	J609	J610	J611	J612	J613
D7	D6	D5	D4	D3	D2	D1	D0	OLED RD	OLED WR	OLED DC	OLED RES	OLED CS

Title: OLED Display		
Size A4	Number	Revision 2.4B
Date: 15th Jan 2013	Sheet 5 of 7	



SST25VF016B not loaded by default

Title: SPI Flash		
Size A4	Number	Revision 2.4B
Date: 15th Jan 2013		Sheet 6 of 7

1

2

3

4

D

D

C

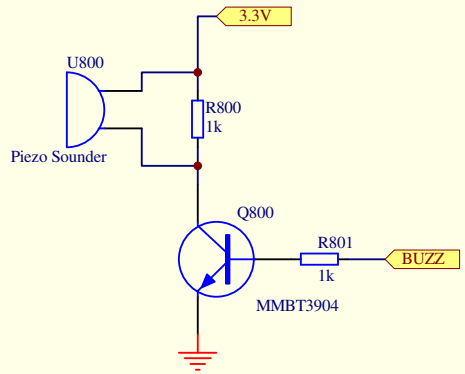
C

B

B

A

A



Title: Piezo Sounder		
Size A4	Number	Revision 2.4B
Date: 15th Jan 2013		Sheet 7 of 7

1

2

3

4